



EASY & POWERFUL

EDU Solutions

DataDrivenDecisionMaking

TURN DATA INTO DECISIONS



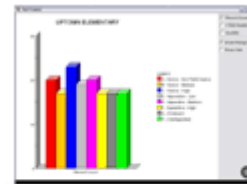
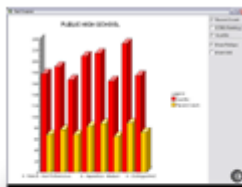
EDU SOLUTIONS MISSION STATEMENT

QUESTION - QUERY - QUANTIFY

"EDU will promote student learning and accelerate school performance by improving the ability to access and analyze relevant data, which will empower administrators and teachers to improve student outcomes and increase the effectiveness of their efforts by an intuitive and easy to use analytics system. EDU reduces the load on the IT department by placing powerful ad-hoc reporting into the hands of everyday users"



EDU HAS BEEN DESIGNED SO THAT IT IS SO EASY TO USE A MOUSE CAN DO IT!!!



“EDU provides a one stop shop to access and aggregate district data whether it is student grades, test scores, discipline, enrollment etc. and further report the data by subgroups (ethnicity, gender, poverty) to get a “big picture” of the data. EDU allows us to take all types of data subsets and produce valuable information that can be used to make decisions on curriculum, purchasing and planning. EDU is easy to use and seamlessly exports to other tools such as MS Excel to allow the use of familiar and commonly used tools. Because EDU is easy to use, you do not have to be an IT expert to use the program and the load on the IT department is reduced especially as more data sets are incorporated into the database. It is browser-based so deployment is a breeze”

Lisa Amerson, Director of Technology for Calhoun County Schools in Alabama

Attendance

Analysis of student absences by level, allowing users to determine the effects of absences on student performance. Year over year comparison to track student improvement in grades related to reduced absence counts.

Student Demographics

This module provides a variety of information from the student information system such as gender, ethnicity, lunch program, special education, address, transportation etc

Course Scores

Student grades by subject broken down. Teacher to teacher grade comparisons. Curriculum and standardized test grade comparisons. Grade tracking based on outside environment factors such as absences, ethnicity and infractions

Infractions

Provides detail on student infraction levels, broken down by infraction type. Allowing schools to analyze the effect and costs both financially and socially.

Teacher Demographics

Analysis of teacher costs, and activities. Salary demographics, teacher cost per school. Teacher qualification tracking.

Test Scores

Specific state testing views that allow users to fully determine student successes. Year over year test scores analysis. At risk student tracking.

Data Mining has never been simpler

EDU is a Data Analysis and Mining product that allows K-12 school district administrators to spot trends, predict outcomes and make faster, better, data-driven decisions by analyzing their volumes of data.

The Problem

As the need for accurate reporting is increasing with No Child Left Behind (NCLB) requirements, educators are being pressed for prompt, accurate answers. "How did my ninth graders perform on the high-stakes tests this year compared to last year?" "Do we have a problem with fighting in our high school?" "Which teachers are producing the highest level of student improvement?" While many of the questions being asked are very important, the sheer volume can be overwhelming.

The Solution

EDU is the answer to this problem. This fast and powerful knowledge tool automatically pulls data from a variety of sources, including industry standard student information systems, and lets administrators easily answer pressing questions. These answers are delivered through a user-friendly graphical interface that can create customized pie charts, bar graphs and other visual renderings and reports. With EDU, K-12 administrators can easily view data and answer questions about what's going on in their districts, schools and classrooms.

EDU has demystified and simplified complex but valuable functions, data disaggregation and data mining, for non-technical users. All data is always disaggregated - automatically. No more manually transcribing Excel data or complicated merging of text files. Aggregate and view data by just pointing and clicking. EDU was designed to put the power of data mining into the hands of non-technical administrators - easy to learn and easy to operate. EDU is interactive – and fast! Get quick answers to questions like "Have our schools attained adequate yearly progress toward state objectives for learning proficiency?" and "How many suspensions has our district imposed for fighting and alcohol infractions, and how do these break down by race and gender?"

The Technology

EDU's unique approach to solving the business intelligence dilemma begins by helping administrators spot trends and identify potential problems. After working with our customers to identify key metrics, The IQ tool can extract and synchronize data from any of the organization's existing data sources, whether as complex as SQL or as simple as a .csv file sent from the state board. This data is pulled together and stored as objects on secure servers. The information is then conveniently displayed giving the user the ability to easily navigate a large number of data dimensions and fields. Because all of the information is stored as an assigned object, decision makers are able to re-categorize data sets on the fly, through the tree technology and view with graphic interfaces or export to excel, print or pdf report format.

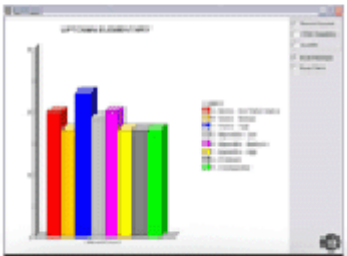
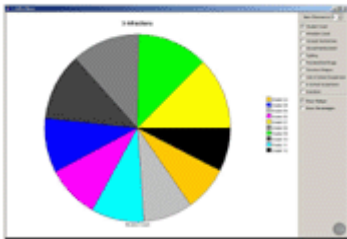
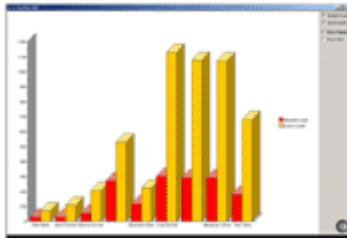
The IQ tool launches from a user's desktop as easily as Internet Explorer or any other Microsoft® Windows® application. Its unique design allows any user with proper access to dynamically analyze important business information without the constant involvement of an IT professional. All capabilities within the application are "point-and-click" and easily mastered by users of varied experience levels. A user needs no familiarity with Excel or statistical-based modules to be successful with this product.

"EDU has revolutionized the way we make decisions in our district, we are now able to spot trends earlier, find correlations between test scores and student achievement, and monitor No Child Left Behind subgroup performance to head off problems before they adversely affect our district."

Dan Ice, Director of Technology for Alexandria Community Schools Corp, Indiana

MEDIA CONTACT
Alexander (Sandy) Beckett
 Q3 Solutions

Tel 813.885.4429 / Fax 206.203.0474
sandyb@q3solutions.com



References

Reference # 1	Reference # 2
Elmore County Schools (AL)	North East Information Center (NY)
Barbara Burchard	Carl Strang
IT Coordinator	Director of NERIC
334 567 1228 ext 2123	518 862 5331
barbara.burchard@elmore.k12.al.us	cstrang@gw.neric.org

Reference # 3	Reference # 4
Williamsburg-James Schools (VA)	Concord Community Schools (IN)
Richard Woodward	Dick Pyle
Programmer/Analyst	Director IT
757-565-9193	574-875-5161
woodwardr@wjcc.k12.va.us	rpyle@concord.k12.in.us

Reference # 5	Reference # 6
Alexandria Com School Corp (IN)	Calhoun School District (AL)
Dan Ice	Lisa Amerson
IT Coordinator	Director IT
765 298 6403	256 741 7475
dice@alex.k12.in.us	lamerson@calhoun.k12.al.us

EDU paid for itself within two weeks after we installed it! Our district was hit with an OCR (Office of Civil Rights) allegation. EDU provided the data to enable us to respond in two days, not the two months it would have taken us using our old system."

Donna Dickson, Director of Student Services for Shelby Co. Schools in Alabama